

Escape route sign LED

Designed for infra structure instalments.

Housing in stainless steel EN 1.4404 and front in UV resistant, self extinguishing polycarbonate with laminated easy-to-clean protection.

IP66.

Single sided. High luminance

Central supply 230V AC/DC. Driver can be individual (Driver 91) or for groups (Driver 24).



SPECIFICATIONS AND ACCESSORIES

Housing:

1.5 mm Stainless steel EN1.4404

Ventilated

IP66

Front:

3 mm PC long life UV-resistant, self extinguishing.

Anti-graffitti laminated

Light source:

LED 4000K

Luminance:

300 cd/m²

Consumption:

2 W

Cable:

Radox 125 2x0,75mm². Self extinguishing EN50363, IEC60332-1, IEC60332-3

3 m

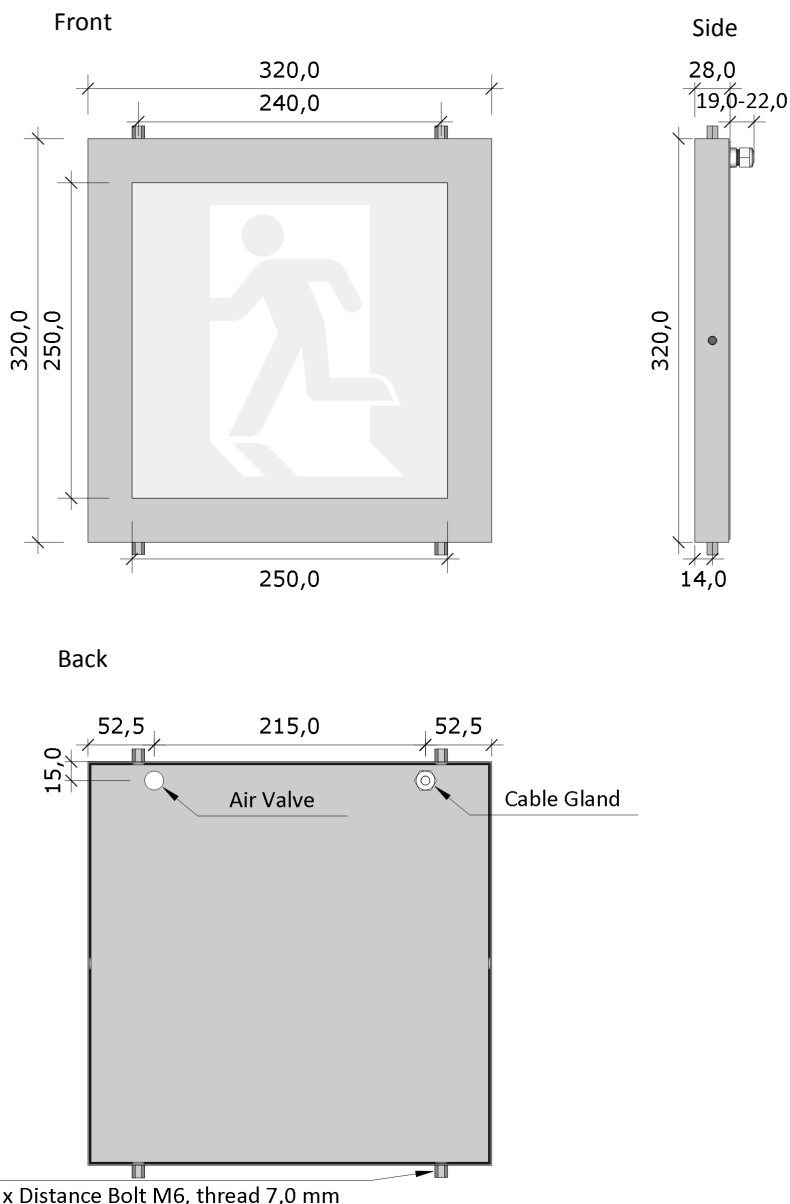
Drivers: (See appendix A)

Model 91 Individual (Fused, wiring thru)

Model 24 Groups

Options:

Powder coated



CE branded. Made in Sweden

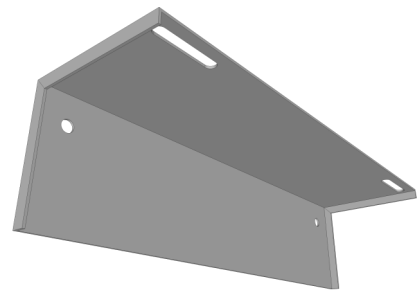
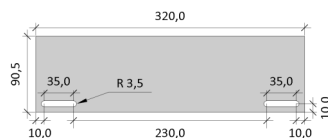
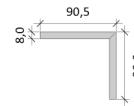
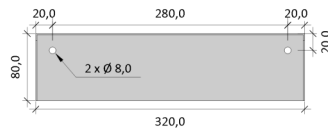
19704 WALL BRACKET D

Function:

Mounting on wall, Offers space behind the luminaire to install driver 91

Material:

2 mm stainless steel EN1.4404



19802 WALL BRACKET V

Function:

Fits 2 luminaires 5220S in 100° angle to provide visibility from all directions. Prepared for optional fixing of beacon 5310.

Material:

2 mm stainless steel EN1.4404

